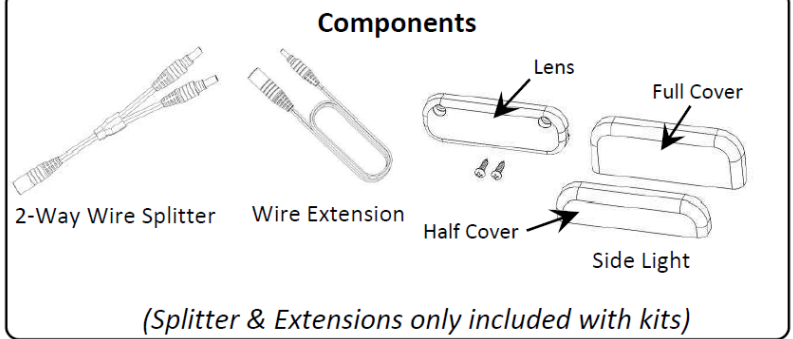


# Riser/Quartet Accent Light / Kit

## Pre - Installation Notes

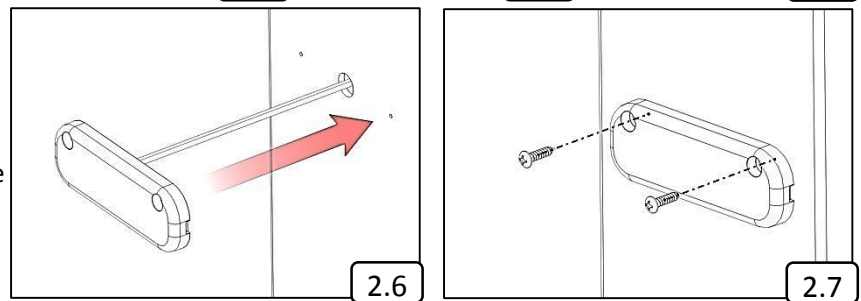
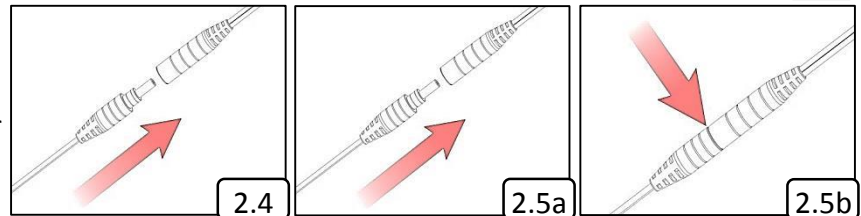
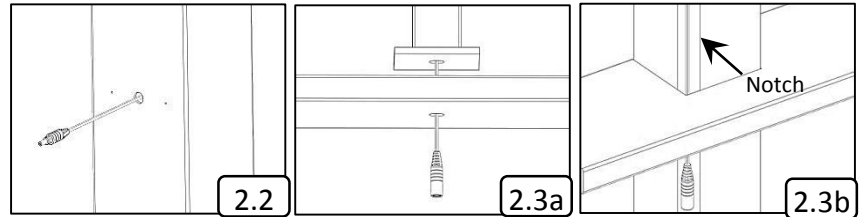
- Do not cut any wires. Any extra wire length can be coiled up.
- During installation, it is recommended that you temporarily cover the photocell on the transformer with dark tape so the lights will be on when you plug them in. This will help check for any issues during installation. Remove tape when done.



### Step 1

#### Prepare the Transformer and Wiring Harness

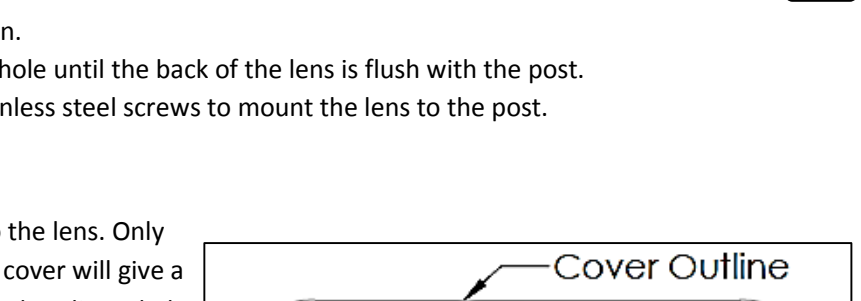
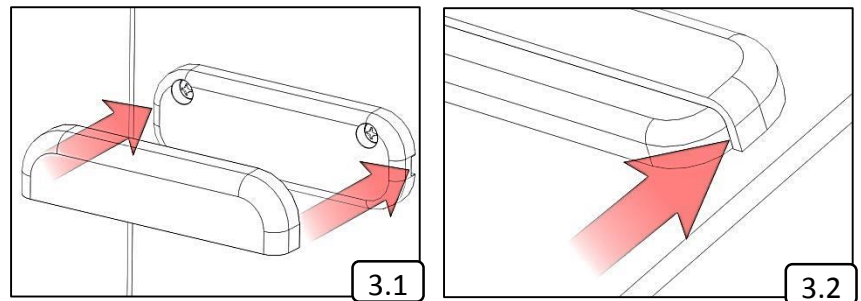
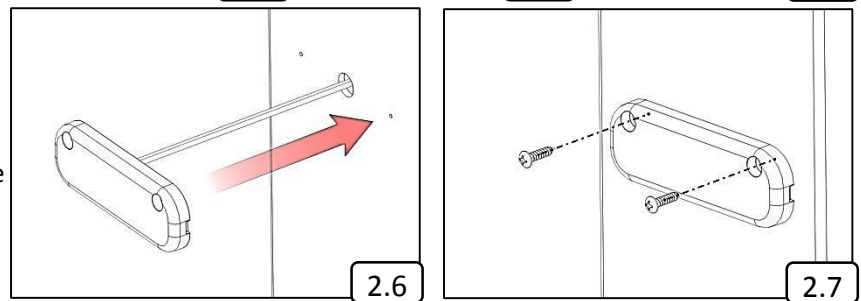
- 1.1 Follow instructions provided with the transformer.
- 1.2 Follow instructions for the wiring harnesses so there is a male connector located at each location that will have a light installed.



### Step 2

#### Prepare the Post and the Back Plate

- 2.1 Place the template at the desired location and pre-drill two 1/16" holes for screws and one 1/2" hole for the wire.
- 2.2 Run a Harness (not included) down the inside of the post or post wrap with the male connector hanging out of the 1/2" hole that was just drilled.
- 2.3 The female connector should be hanging out of the bottom under the deck, it will fit through a 1/2" hole.  
(a) If using a metal post mount, run the wire down the center of the post mount through the center hole.  
(b) If using a wood post, a small notch can be removed from the corner to allow room for the wire. Ensure that future screws or brackets will not damage the wire.
- 2.4 Plug the female connector (from Step 2.3) into the male connector that is located beneath the post (from Step 1.2).
- 2.5 (a) Plug the male connector (from Step 2.2) into the female connector attached to the lens.  
(b) Press firmly until the connection is fully engaged. The light should be illuminated if the transformer is on.



- 2.6 Push the wire and connection back through the 1/2" hole until the back of the lens is flush with the post.
- 2.7 Align the pre-drilled holes and use the 2 included stainless steel screws to mount the lens to the post.

### Step 3

#### Install Lens Cover and Finalize Installation

- 3.1 Align the cover with the lens and snap the cover onto the lens. Only one cover will be used per lens (2 are supplied). Each cover will give a different lighting effect. The unused cover can be saved or discarded.
- 3.2 If needed, the cover can be removed by carefully inserting a small flat blade screwdriver near the latch on 1 side and popping off the cover. Care should be taken to not scratch the lens.
- 3.3 If dark tape was used to cover the photocell on the transformer, remove it for normal operation.

